



ATWELL COLLEGE

2020-2022 Business Plan



Atwell College
201 Brenchley Drive, Atwell WA 6164
Tel 61742200
Email atwell.college@education.wa.edu.au

Embracing the Future



Embracing the Future

Vision Statement

Atwell College strives to provide a safe and supportive environment for all College community members. Together, we seek to fully develop each student's intellectual, physical and social/emotional capacity in an engaging and positive learning environment of quality teaching. Our student centred philosophy will focus on students becoming global citizens with an informed concern for the environment and social justice issues. This will foster a strong appreciation of fundamental societal values as positive community members and is intrinsically linked to their self-worth and respect to others.

Glossary

AITSL	Australian Institute for Teaching School Leadership
DoE	Department of Education WA
WACE	Western Australian Certificate of Education
ATAR	Australian Tertiary Admission Rank
ABLEWA	Abilities Based Learning Education, Western Australia
IEP	Individualised Education Program
NAPLAN	National Assessment Program - Literacy and Numeracy
OHS	Occupational Health and Safety
IT	Information Technology

Our Shared Values

Atwell college has five shared values that students are exposed to in all that they do. These are part of the Atwell College culture and we continually reinforce these in our college community. Our values are:



Consideration

Acceptance, tolerance and inclusive of others and concern for the rights and welfare of others.



Aspiration

A vision for future goals and achieving at the highest potential.



Respect

Respect for oneself, respect for others and respect for the environment.



Responsibility

Social and civic responsibility.



Self-Motivation

Pursuit of knowledge, striving to achieve potential.

Atwell College Self-Assessment

The College actions improvements in key strategic areas. Through self-assessment processes designed to make judgements on school and student performance, the College responds to information and develops plans and programs to support student learning.

This Business Plan outlines the priority areas on which our self-assessment and review will be based. The 2020-2022 Business Plan priorities are;

- Learning Environment
- Quality Teaching
- Student Achievement

The Business Plan priority areas form the learning area operational plans and classroom teaching and learning planning.

The Atwell College Context

Atwell College started with Year 7 and 8 students in 2008. As a progressive school located in the suburb of Atwell, it has grown to accommodate approximately 1480 students. We strive to provide every student with opportunity to maximise their learning to achieve their potential in a safe learning environment and transition into a meaningful, post-school pathway. Multiple educational pathways provide our students with opportunities for university, TAFE or other training organisations and employment.

At Atwell College, student learning is the focus of all that we do. We believe every student is capable of making progress given the appropriate teaching and support. The staff strive to deliver engaging, high impact learning to meet the diverse needs of the students in a positive and engaging environment. The use of contemporary technology is an integral part of the teaching, learning and working environment.

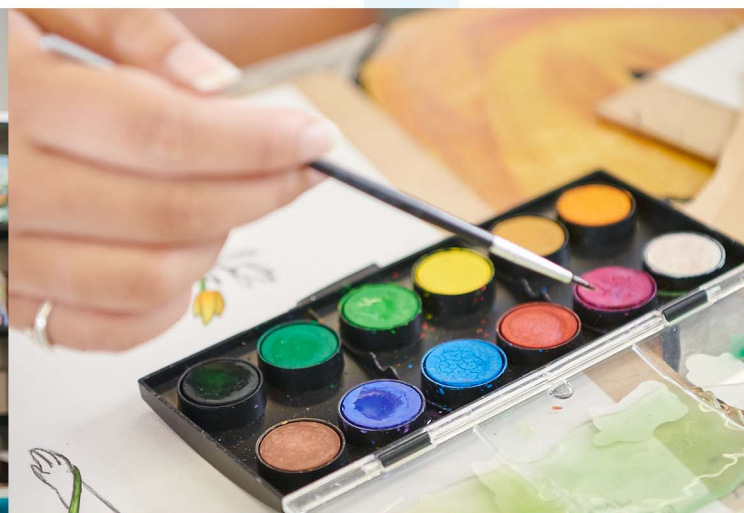
Atwell College is a Positive Learning Environment (PLE) school. PLE is designed to support student wellbeing and engagement in learning. Agreed positive behaviours are reinforced and applied to all aspects of college life. In senior school, we have a well-developed honours program that recognises student achievement in the Arts, sport, academia, community service and service to the environment. This has now been integrated into the lower school to promote student achievement in every year.

The high quality academic and vocational curriculum is supported by a large variety of cultural, artistic and sporting extra-curricular programs and activities that enhance the educational experience for students. Our Netball Specialist Program (recognised as a Tier 1 program by Netball WA) and our Rugby League Specialist program (supported by NRLWA) provide opportunities for those students who demonstrate positive attitudes and have the athletic ability and passion for these sports.

Atwell College caters for students with a full spectrum of disabilities from severe intellectually disabled individuals in a specialised building, to students with mild disabilities in small classes in general learning areas.

There is a focus on student-centred planning that encompasses the academic programs as well as the social-emotional wellbeing of students. The Kim Beazley Learning Community (KBLC) building is a purpose built, safe facility for students with special needs. The building is equipped with a hydrotherapy pool, specialist sensory equipment and life skills training rooms and can cater for therapists who attend the school.

Our school collaborates with partner primary schools in the Cockburn Central Education Network (CCEN). Learning partnerships have been formed with Atwell Primary School, Harmony Primary School, Jandakot Primary School and Success Primary School.



Atwell College strives to be an active participant in the community and seeks opportunities to form partnerships which enhance opportunities for our students. Successful schooling involves a collaboration between the school, parents and community. We are all partners in the education of our students assisting in building character, strengthening social values and enabling opportunity to achieve success. Atwell College seeks all appropriate opportunities to be connected to the community through student and community interaction.



Business Plan

2020 - 2022

Priority 1 Learning Environment

Build on the positive learning environment for all members of the Atwell College community.

Strategies:

1. Provide a safe, orderly and engaging learning environment based on consistent classroom expectations and high care.
2. Provide effective pastoral care, social and emotional support, Individual pathway planning and engagement programs according to student needs.
3. Establish a culture where all members of our college community act according to our school values
4. Maintain school wide inclusive practices and programs which ensure all students attend regularly and actively participate in their education.

2020-2022 Student Improvement Targets

By the end of 2022:

- Year 12 WACE achievement will be 85%.
- Year 12 median ATAR will be 75%
- OLNA candidates entering Year 11 will reduce to 20% of the year 10 cohort.
- NAPLAN performance in Year 9 will show progression to achieve 1 standard deviation above the mean in reading, writing and numeracy.
- Overall regular attendance will be 65%.
- Whole school student attendance rate will be 90%.
- 80% of Education support students will show improvement through the ABLEWA assessment tool.
- All Education Support Students will achieve between 70-90% of their SMART goals within their IEP targets.
- 75% of students will achieve an A-C grade in each learning area.
- Student survey results will have an average rating of 3.5 or higher.
- Students who do a certificate, will achieve a certificate two as a minimum requirement.
- 80% of all students in Years 7-10 will participate in three integrated STEM projects per year.
- Atwell College will have three STEM Pathways, two academic and one non-academic, for years 7-12.
- 100% of Aboriginal students will succeed as Aboriginal people in their education.



Priority 3 Student Achievement

Raise the standard of student achievement through targeted and consistent college-wide approaches.

Strategies:

1. Build teachers' data literacy skills to enable them to analyse student performance data effectively and set realistic improvement targets aligned to individual student needs.
2. Implement curriculum pathways for Years 7 -12 that includes essential content, skills and assessments appropriate to the level of student ability.
3. Develop consistent assessment, moderation and grade allocation practices from Year 7 to 12 in all learning areas.
4. IEP's are developed for all students with identified needs enabling access to programs that are best to prepare them for post school life.
All Education Support students will access explicit instruction programs aligned to their individual goals.

Priority 2 Quality Teaching

Build a culture of performance improvement through regular consistent action research of teaching tactics through collegiate observation and coaching.

Strategies:

1. There is a clear direction and accountability for consistent effective teaching in every classroom.
2. Create a shared understanding of an effective instructional model based on research.
3. Implement high impact teaching strategies including Learning Goals; Success Criteria and Effective Feedback into classroom practice.
4. Use a consistent instructional model for collaboration around targeted professional learning.
5. Provide specialist support & Professional Learning to enable the College to effectively cater for the needs of students with disabilities.
6. Teachers high expectations are facilitated by specific pedagogical approaches in classroom practice.